



State of Nebraska
Department of Health and Human Services
Long-Term Care Ombudsman Program

Understanding Changes in the Survey Process



Effective October 1, 2010, staff working in Medicaid and/or Medicare certified SNFs/NFs will begin asking residents the following question upon admission, quarterly, upon significant change, and at other regularly-scheduled assessment time frames:

“Do you want to talk with someone about the possibility of returning to the community?”

This Presentation Will:

- Provide an Overview of MDS 3.0
- Section Q
- Review Concerns
 - Discuss Ombudsman Assistance

What is Section Q?

It is the section of the state survey process that centers around the resident.

It supports the persons individual right to choose where they receive their long term care services and supports

It reinforces states' efforts to comply with the Americans with Disabilities Act and the U.S. Supreme Court decision in Olmstead vs. L.C.



Section Q Overview

Through the expansion of Medicaid waivers and state and federal initiatives such as the Money Follows the Person Program, Medicaid eligible individuals needing long-term care and supports now have more choice in care options.



Section Q Overview

Section Q is to be used with all nursing home residents, regardless of payment source.



Section Q Overview

Section Q focuses on Resident Participation in Assessment and Goal Setting.



Section Q Overview

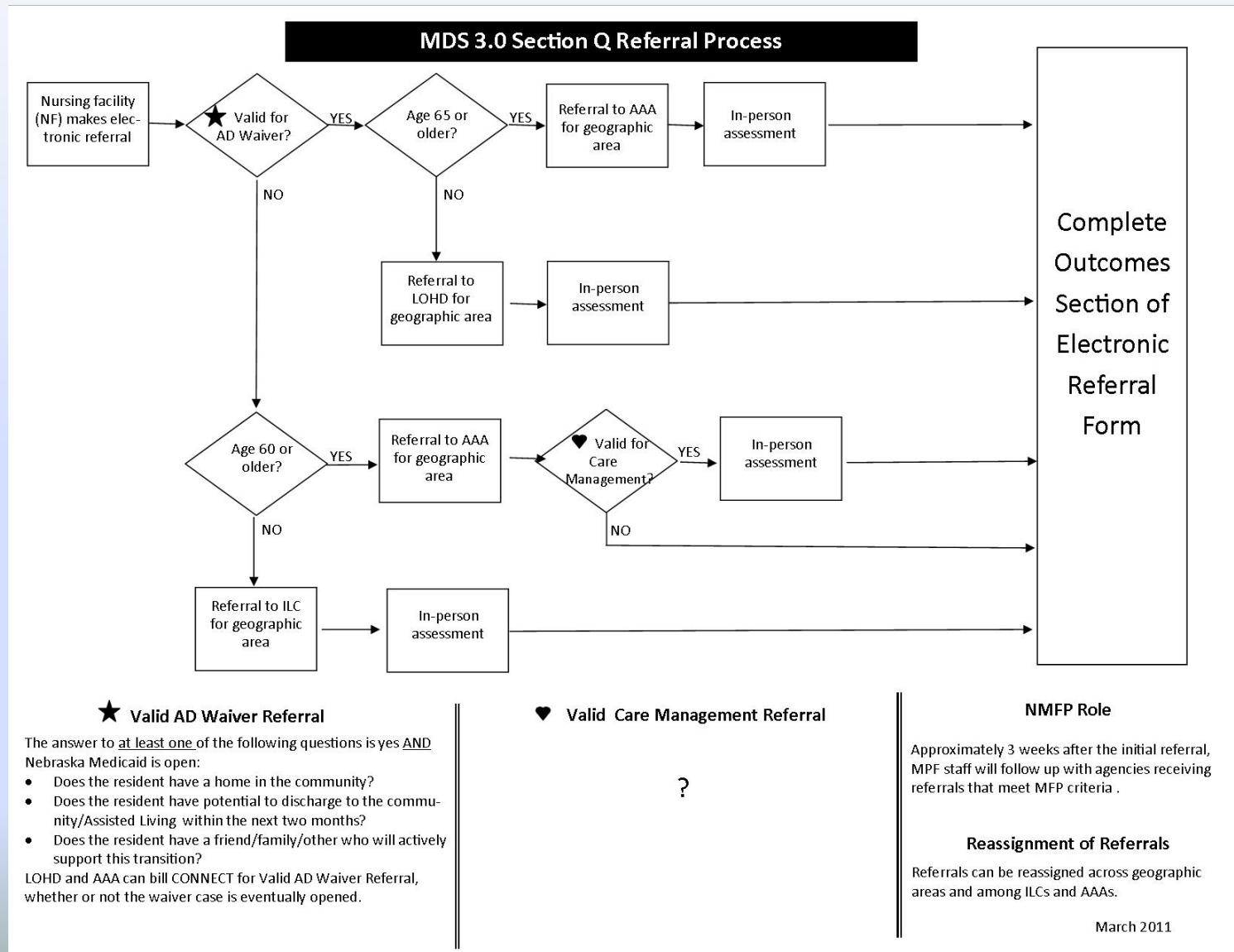
Results:

Nursing home residents who may not have previously been considered as candidates for community living are now being reassessed.

However, reassessment is not a guarantee that transitioning will occur.



Referral Flowchart



For questions about the Money Follows the Person Program, please call: 800-358-8802 ext. 1-2308



Nursing Home Residents

When Iris moved to the nursing home, she didn't think she'd ever be able to leave... today Iris is back home with services that help her live independently and safely...

The Nebraska Money Follows the Person project provides assistance to Medicaid-eligible individuals who currently reside in a nursing home and wish to transition back to the community and receive supportive services in their home or apartment.

For additional information call (800) 358-8802 ext. 1-2308

or (402) 471-2308 or visit our web site at

www.dhhs.ne.gov/moneyfollowstheperson

CLS-PB-20 Created 05/10 (99020)



Concerns

It's a difficult question to ask:

- It might be providing false hope
- It's probably not realistic in many cases
- Sometimes there aren't enough service providers to provide care in the community the resident wishes to transition.

Concerns

Isn't it unrealistic to believe that high care residents on Medicaid might be able to go home?



Concerns

Some residents become
Fearful when asked if
they want to leave
because they believe
they are being
involuntarily
discharged.



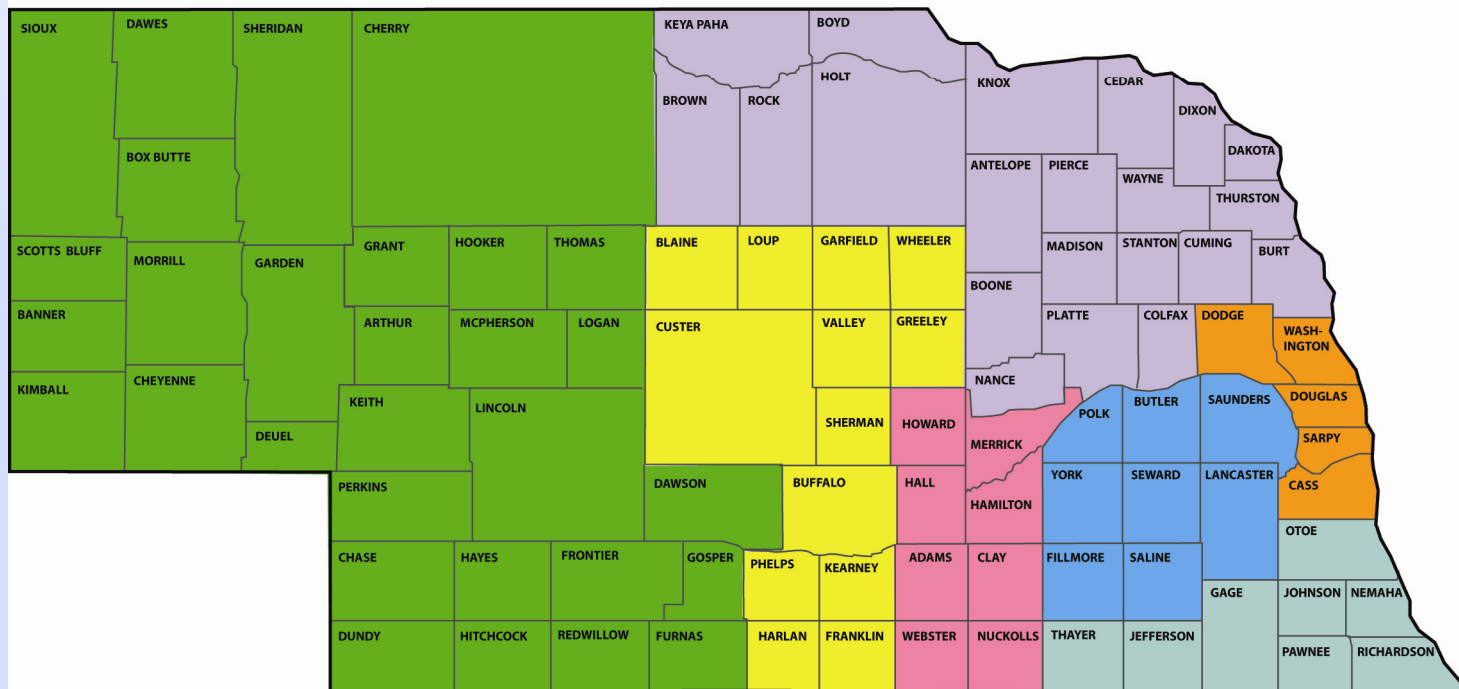
Concerns

Are there special considerations for individuals with a court appointed guardian?



Ombudsman Assistance

Nebraska Long-Term Care Ombudsman Program



MAP-93 Rev. 12/10

Ombudsman Assistance

An Ombudsman can assist with difficult transitions by visiting with residents and family members.



Ombudsman Assistance



An ombudsman can provide a resident with information about the transition process and what can be expected.

Ombudsman Assistance

An ombudsman can provide information to resident and family councils about the transition process.



Ombudsman Assistance

In some areas, the ombudsman will be sent out prior to assessment, but after the referral is made to visit with the resident about his or her options.



Ombudsman Assistance

An
ombudsman
will continue to
respond to any
facility staff
concerns
regarding the
well-being of
any resident!



Questions



Thank You!

Nebraska Long-Term Care Ombudsman Program

PO Box 95026

Lincoln, NE 68509-5026

1-800-942-7830

